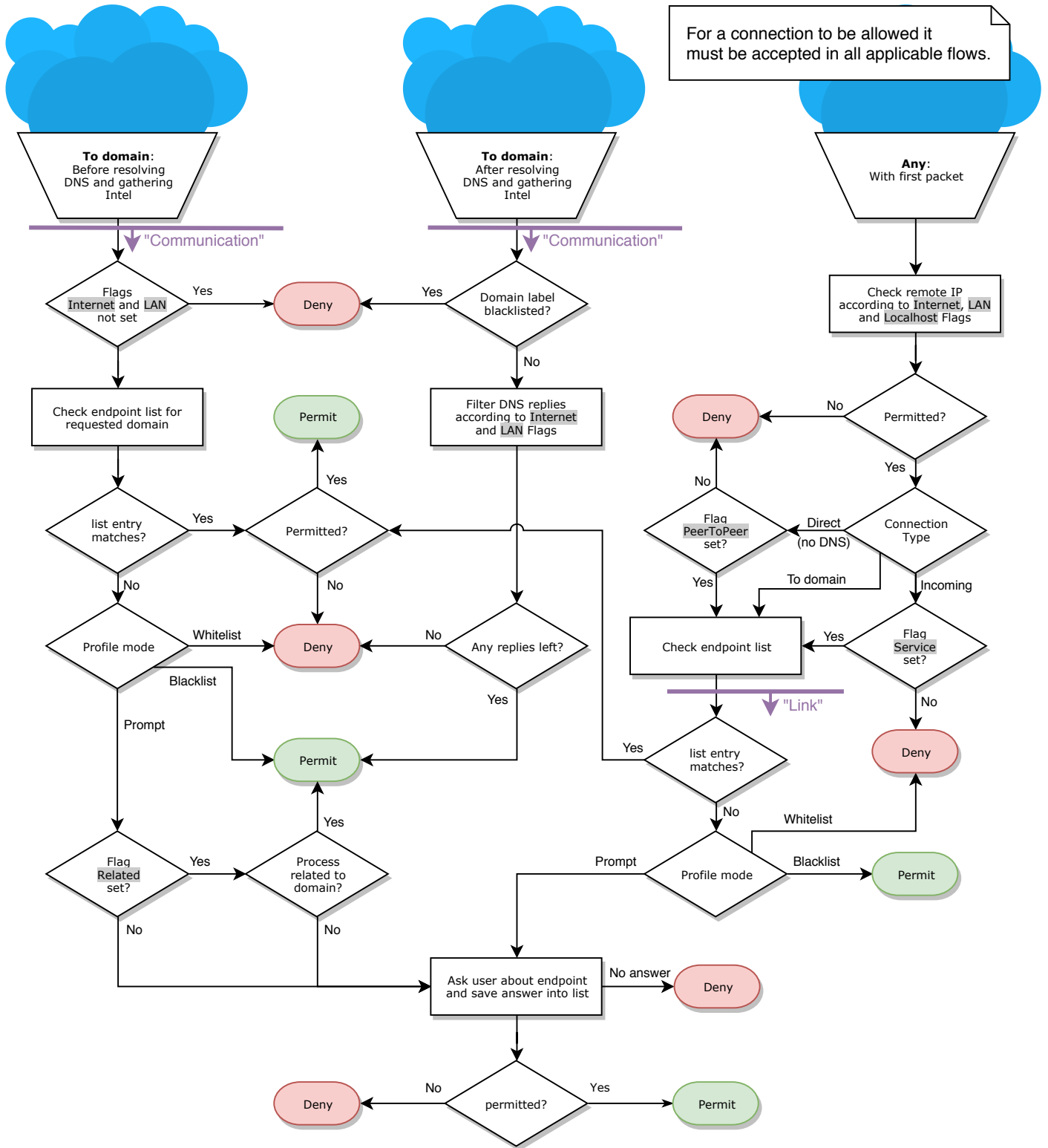


# Portmaster Firewall Decision Flow



- Connections by the Portmaster itself are always allowed.
- Connections are re-evaluated on the next new Link when a Profile has changed, Links are never re-evaluated.
- Links may be inspected by additional modules, which can then deny previously permitted Links, but not permit previously denied ones.
- Technically, inbound packets are always dropped, outgoing packets are blocked with a TCP Reset or an ICMP port-unreachable error message.